

# FLOWCINE | BLACK

## BLACK ARM SHOCK AND VIBRATION MOUNT



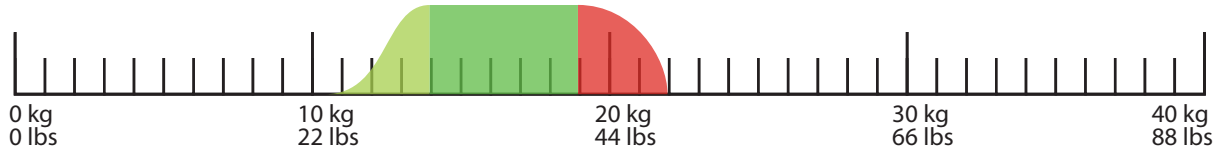
**Vibration mount #01** Range 7-10kg payload (15-22lbs)



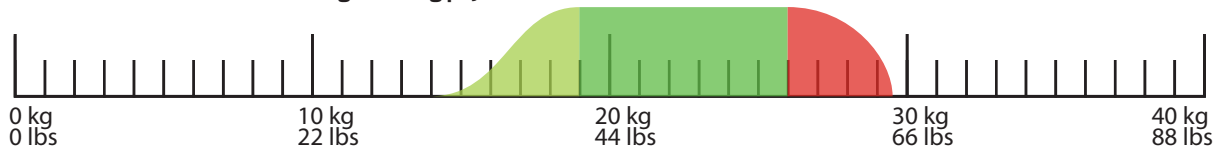
**Vibration mount #02** Range 10-14kg payload (22-31lbs)



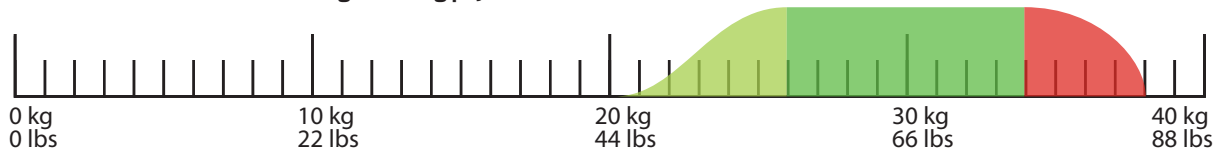
**Vibration mount #03** Range 14-19kg payload (31-42 lbs)



**Vibration mount #04** Range 19-26kg payload (42-57 lbs)



**Vibration mount #05** Range 26-34kg payload (57-75 lbs)



### WIRE ROPE ISOLATOR CHART

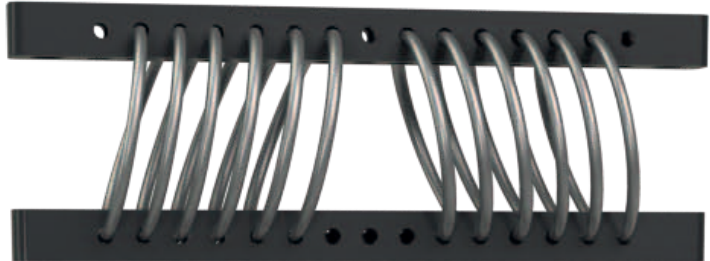
# FLOWCINE | BLACK

## BLACK ARM SHOCK AND VIBRATION MOUNT

### WIRING IDENTIFICATION:

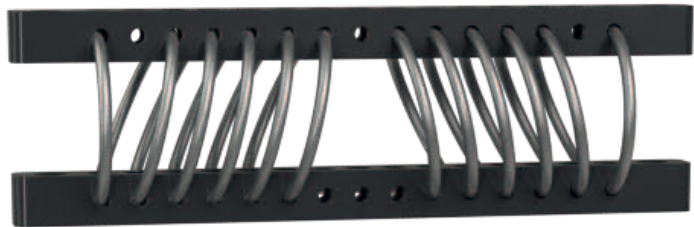
#### Vibration mount #01

Range 7-10kg payload (15-22lbs)  
All wires in a angle.  
Wire diameter 2.0mm



#### Vibration mount #02

Range 10-14kg payload (22-31lbs)  
1 straight wire on each end.  
Wire diameter 2.0mm



#### Vibration mount #03

Range 14-19kg payload (31-42 lbs)  
2 straight wires on each end.  
Wire diameter 2.0mm



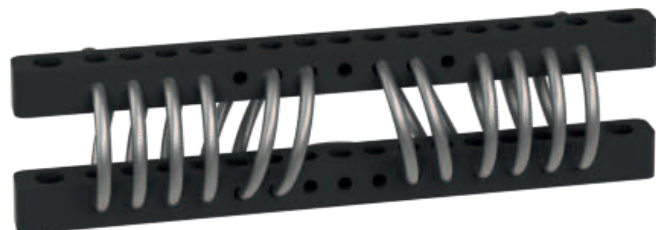
#### Vibration mount #04

Range 19-26kg payload (42-57 lbs)  
3 straight wires on each end.  
Wire diameter 2.5mm



#### Vibration mount #05

Range 26-34kg payload (57-75 lbs)  
4 straight wires on each end.  
Wire diameter 2.5mm



## WIRE ROPE ISOLATOR CHART